

**LENNON, WEINBERG, INC.**



# The Early Show

**PETER DAVIS**

**RICHARD KALINA**

**STEPHEN WESTFALL**

**HARRIET KORMAN**

**CARL PALAZZOLO**

**DENYSE THOMASOS**

**PETER SORIANO**

**JILL MOSER**

**MARY LUCIER**

**STEPHEN MUELLER**

**LAURA LARSON**

**ROBIN LOWE**

**PAUL WALDMAN**

**JOSEPH ZITO**

**ROBIN HILL**

**MELISSA MEYER**

**ROY DOWELL**

**CINDY WORKMAN**

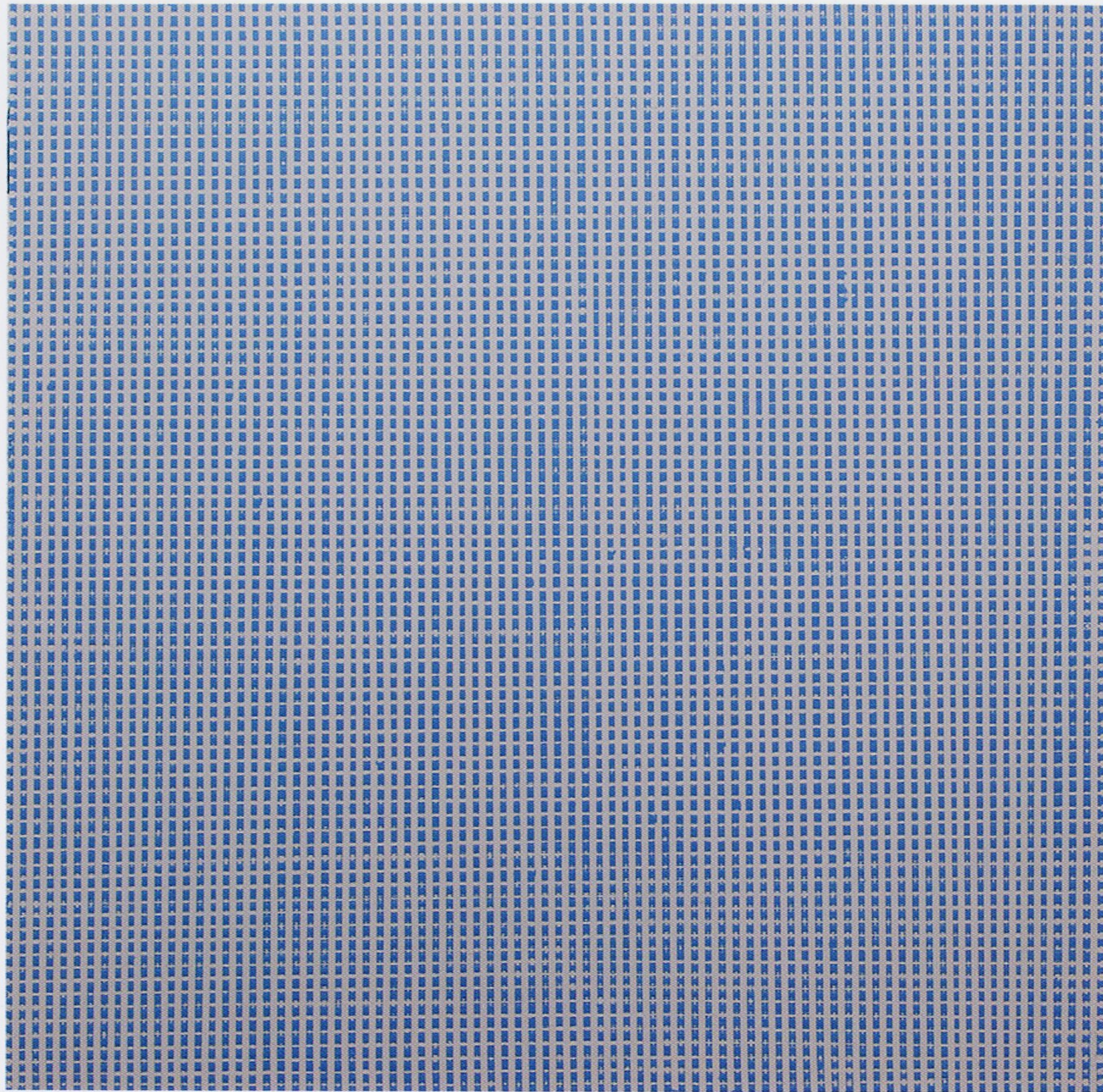
Opens Tuesday, June 19, 6–8 pm

Continues through August 17, 2012

**LENNON, WEINBERG, INC.**

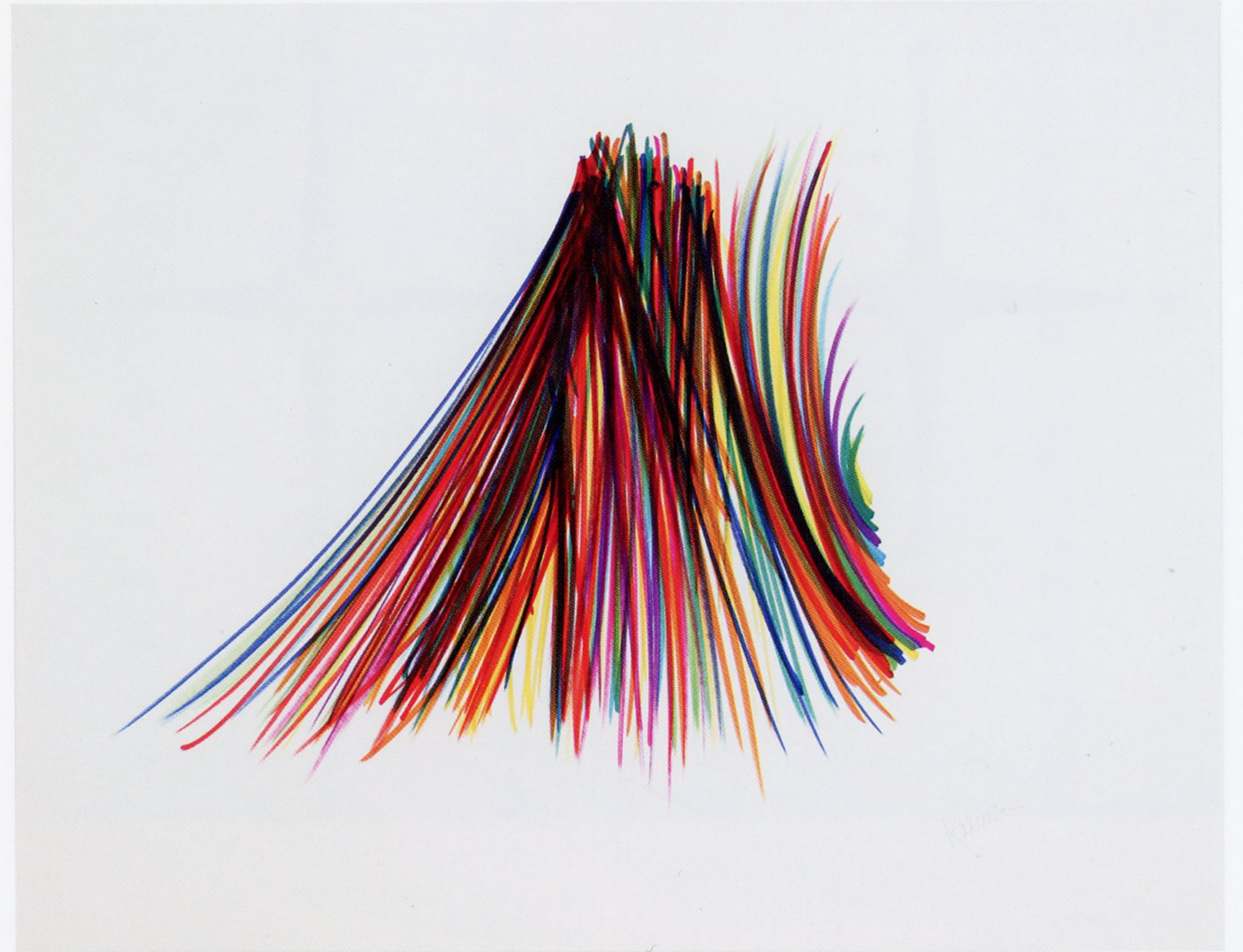
514 West 25 Street New York, New York 10001

Tel 212-941-0012 [lennonweinberg.com](http://lennonweinberg.com)



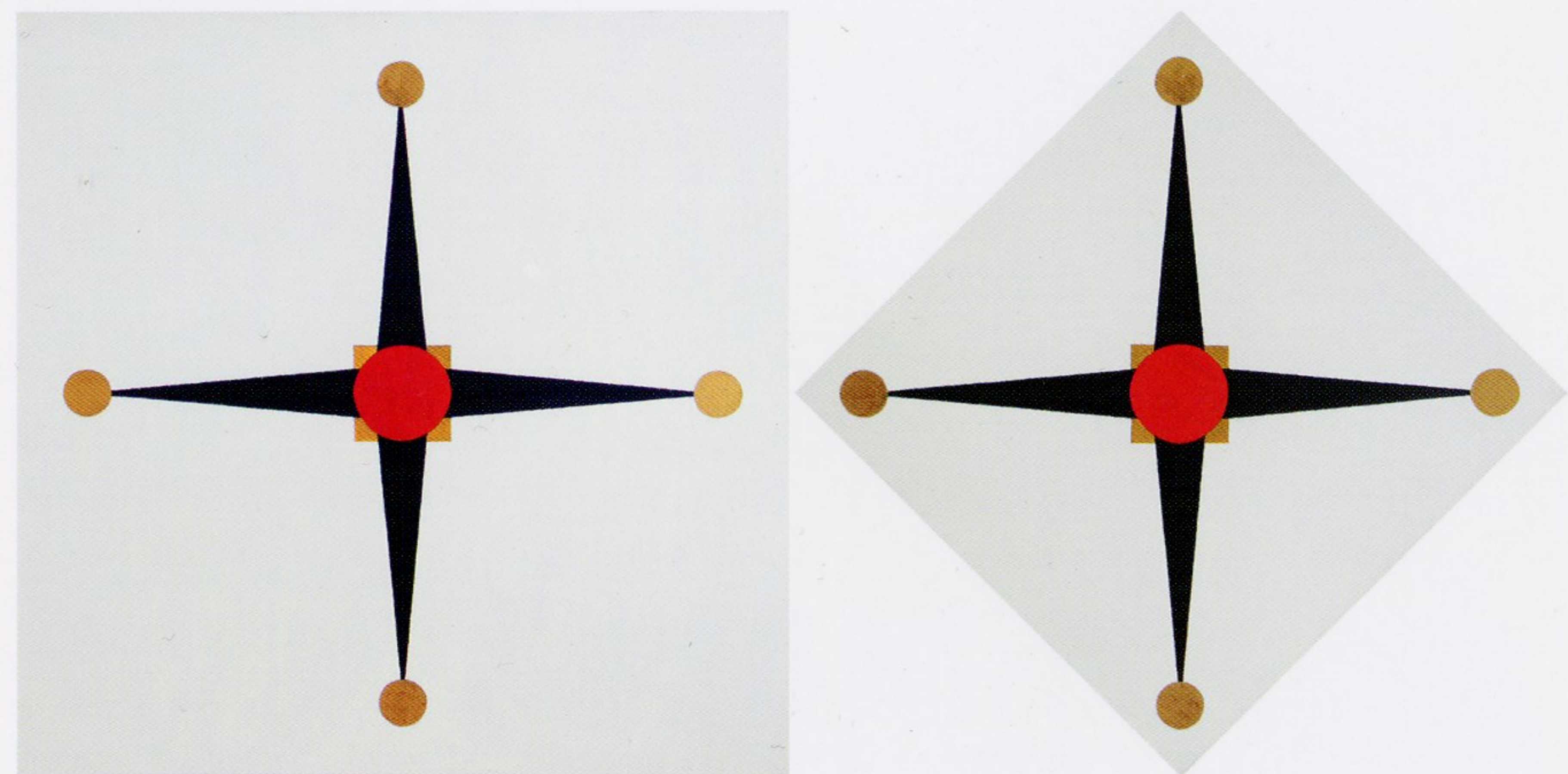
**PETER DAVIS**

*Azure Fusion 3*, 1995, gloss paint and satinwood paint on aluminum, 37 x 37 inches



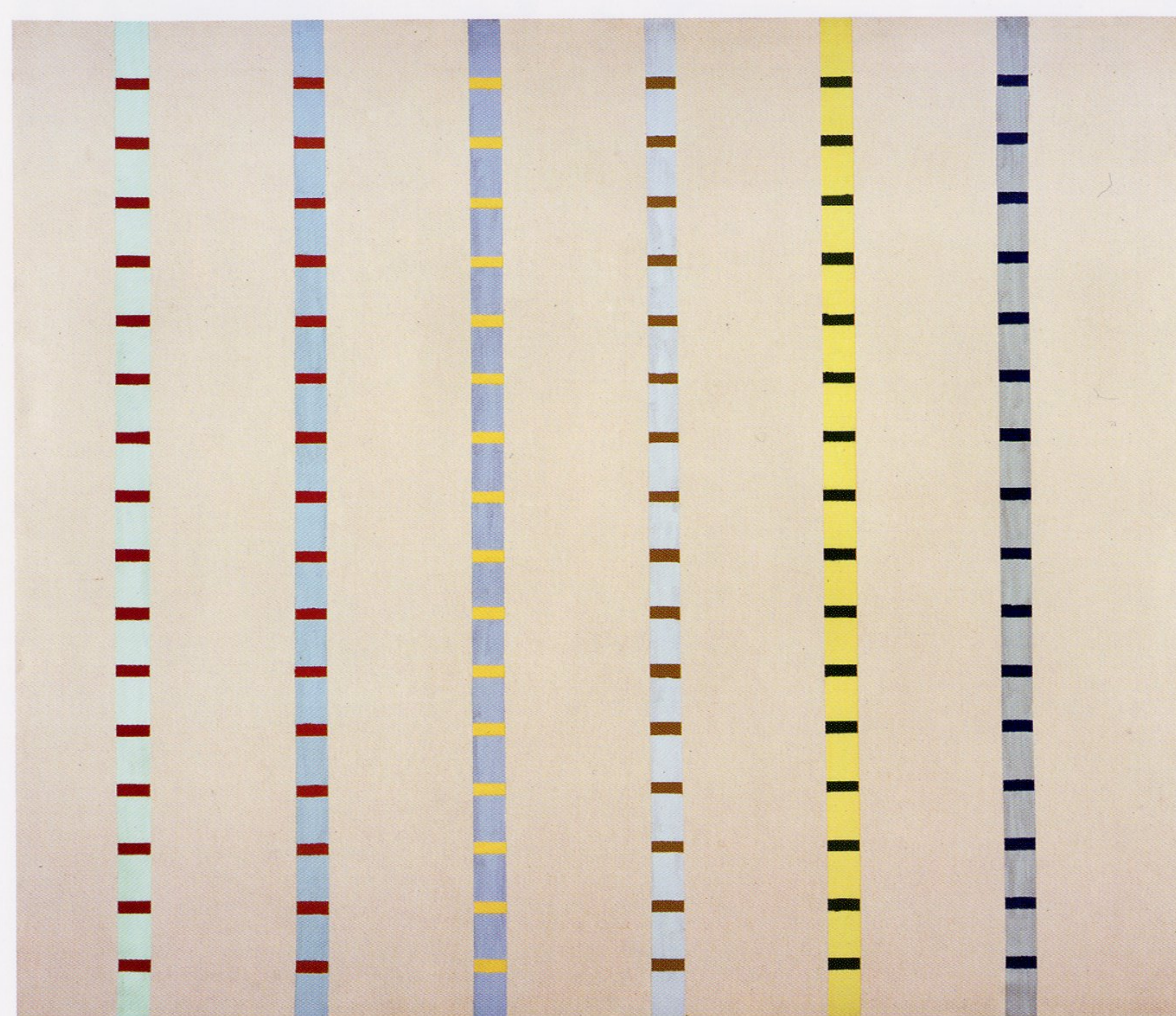
**RICHARD KALINA**

*Untitled*, 1969, marker on paper, 19 x 24 inches



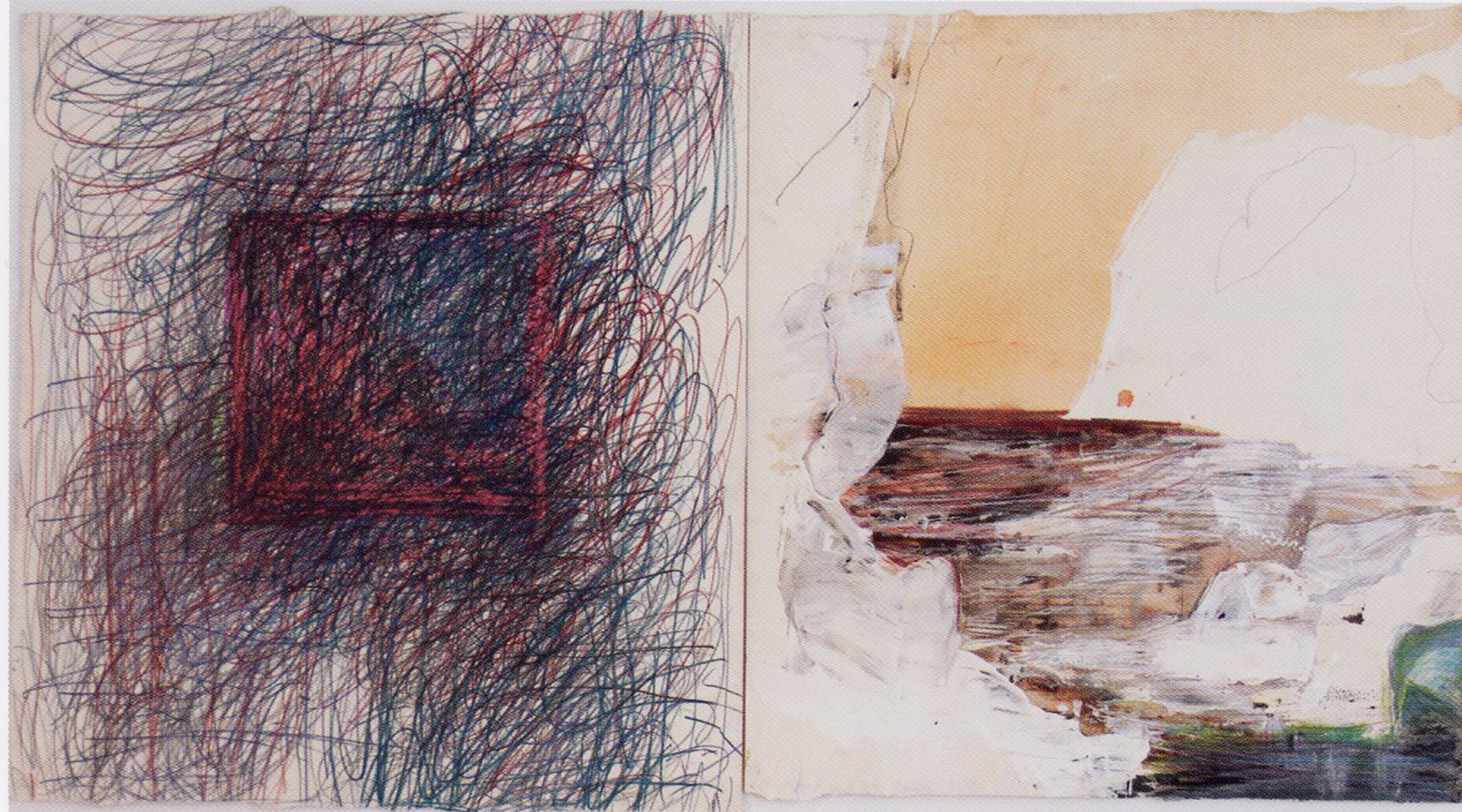
**STEPHEN WESTFALL**

*Beauty and Practicality*, 1987, 48 x 96 inches, diptych, oil on canvas



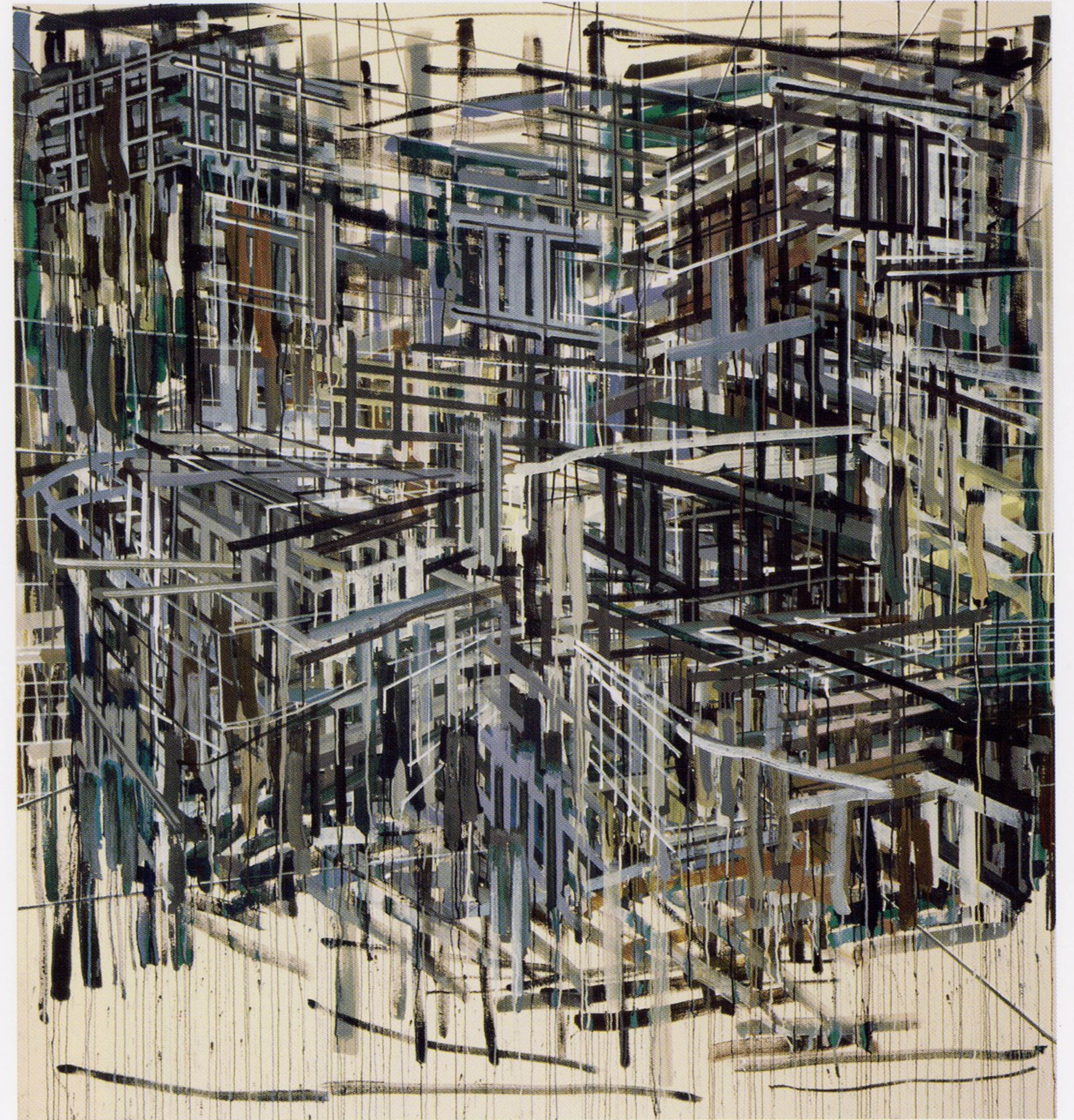
**HARRIET KORMAN**

*Untitled*, 1971, acrylic on unprimed canvas, 72 x 84 inches



**CARL PALAZZOLO**

*Study After Church's Icebergs #3*, 1980, 24 x 44 inches, diptych,  
gouache, pencil, pastel, and gesso on rag paper



**DENYSE THOMASOS**

*Yves Bleu*, 1999, acrylic on canvas, 78 x 72 inches



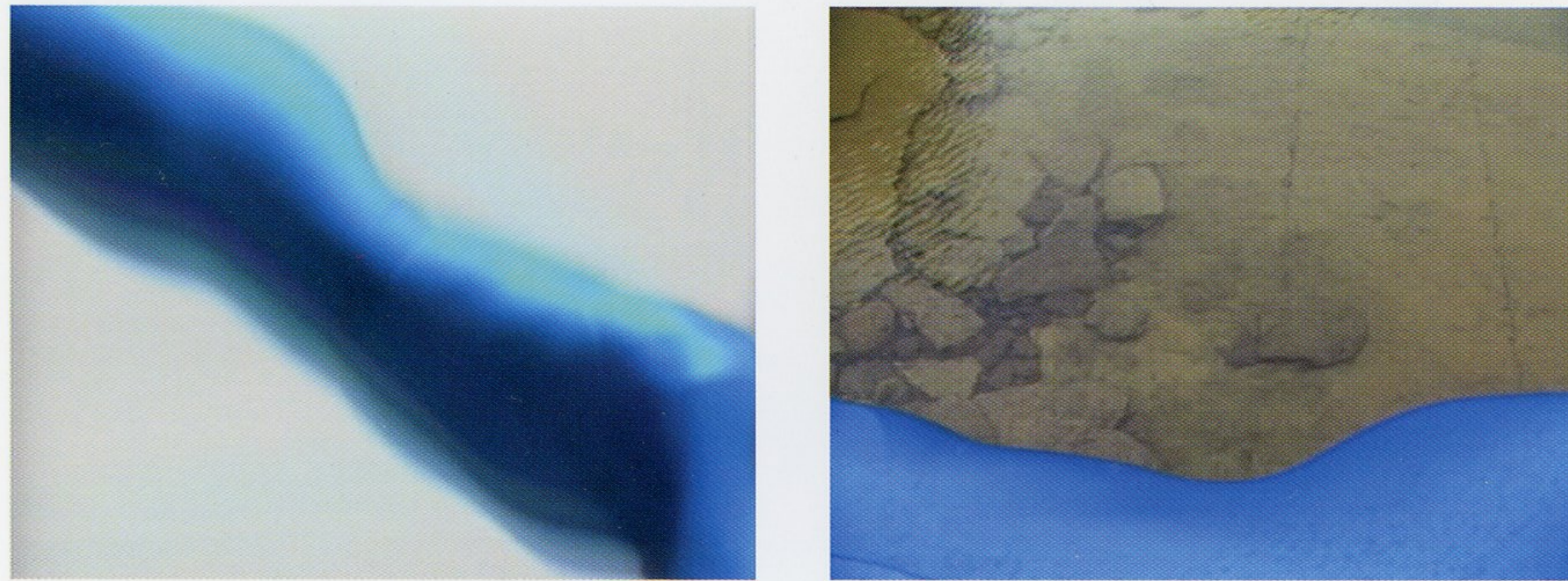
**PETER SORIANO**

*Untitled*, 1990, plywood, 23<sup>5</sup>/<sub>8</sub> x 19<sup>3</sup>/<sub>4</sub> x 20<sup>3</sup>/<sub>4</sub> inches



**JILL MOSER**

*Held's Green*, 1993, 60 x 42 inches, oil on canvas



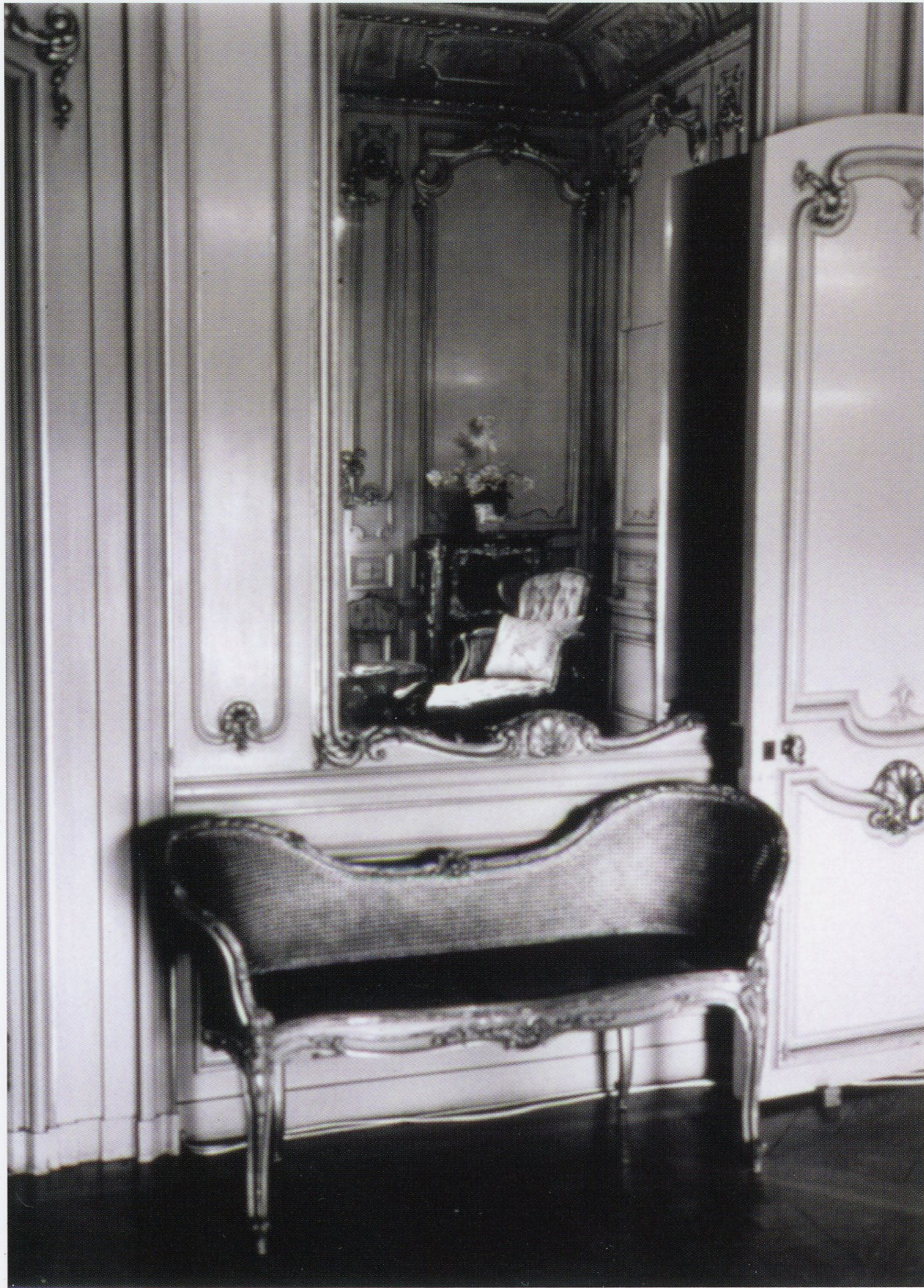
**MARY LUCIER**

*Amphibian*, 1985, two-channel video, color, sound, 10 minutes



**STEPHEN MUELLER**

*Rainback*, 1974, acrylic and pencil on canvas, 72 x 36 inches



**LAURA LARSON**

*Chaise and Loveseat*, 1999, gelatin silver print, 40 x 28 inches



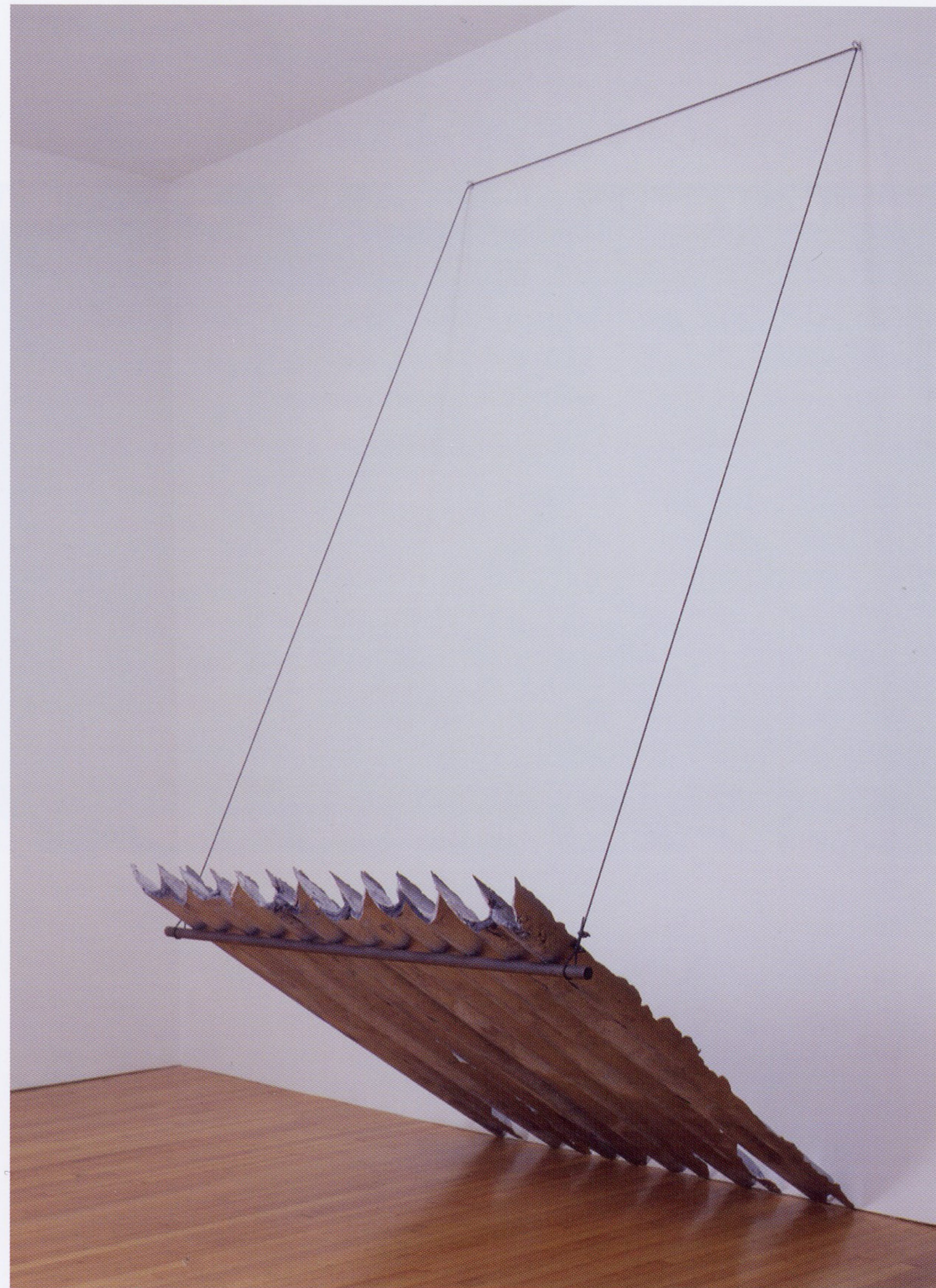
**ROBIN LOWE**

*Trixter, Self-Portrait in Pink*, 1997, oil on aluminum, 64 x 46 inches



**PAUL WALDMAN**

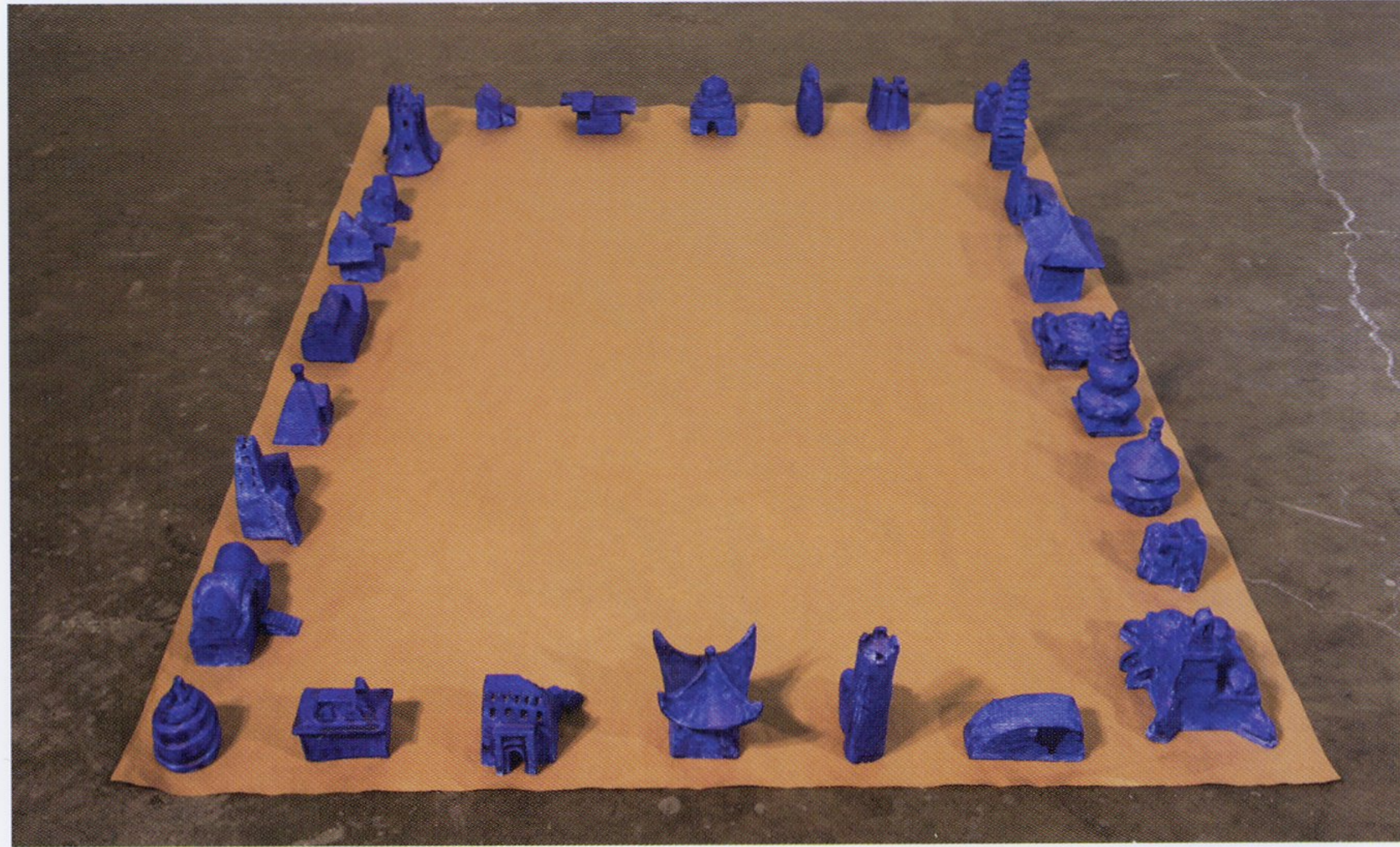
*Bronze Bush Hunt*, 1982, ceramic, 22-carat gold coating, marble, 8 x 17 x 14 inches



**JOSEPH ZITO**

*Shelter*, 1995, 41 x 56 x 72 inches, aluminum, steel





**ROBIN HILL**

*Common*, 1995, clay and pigment on paper, 48 x 60 inches



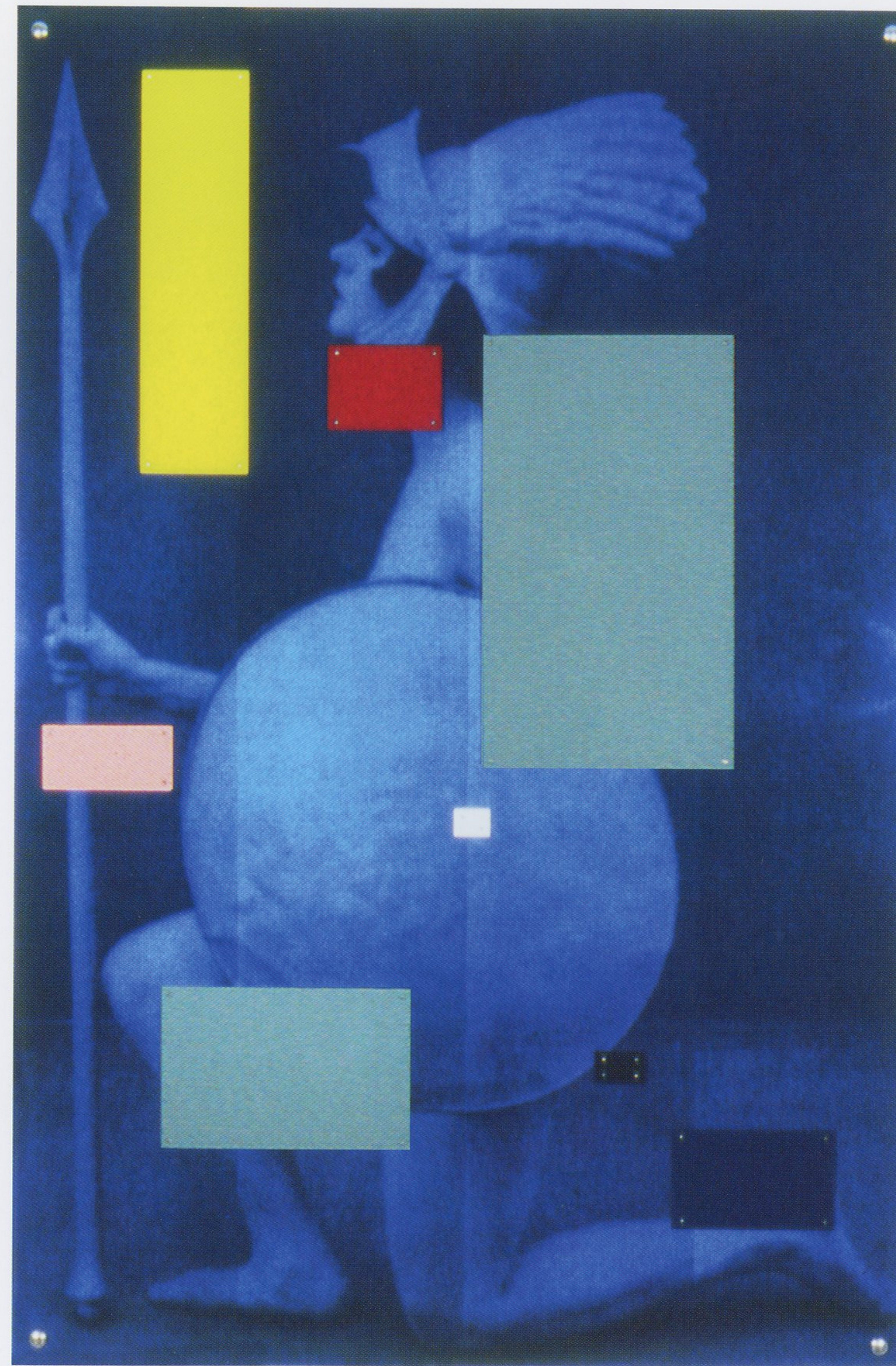
**MELISSA MEYER**

*Untitled Diptych*, 1992, oilstick on paper, 30 x 44 inches



**ROY DOWELL**

*When I Was Born* (#387), 1987, acrylic and sand on canvas, 24 x 20 inches



**CINDY WORKMAN**

*Female Warrior*, 1991, 67 $\frac{3}{4}$  x 45 inches, mixed media